

# Protection Software

Protection software or firewalls are used to provide security against attacks by malicious computer operators, also known as hackers. While ISAT does not provide security, see the **SatDirect Plus Security Statement** for more details, to prevent an attack, many end users feel more comfortable having a last line of defense installed on their own computer. We tested two popular third party firewalls and found that with the **Kerio WinRoute Firewall**, every method of configuration that we tried we could not get the **SatDirect Plus** icon to turn from red to green. The Kerio WinRoute Firewall is designed to be powerful protection for large networks more so than small home and offices.

**Zone Alarm** and the **Kerio Personal** firewalls are smaller protection software packages designed more for the individual user or small network. With both applications there was minimal setup required and once complete did not detract from the Internet experience.

## Specific Configurations for Zone Alarm

- A. The following steps are to be accomplished after Zone Alarm has been installed and is run for the first time.
- B. Double click the **Zone Alarm icon** located in your system tray as shown in Figure 8-1



Figure 8-1

- C. Select **Program Control** and allow access to the **IP Connection Manager**, **MD\_DvbReceiver** and the **Server4PC** programs. A sample screen capture can be seen in Figure 8-2. To do this simply click on the configuration section, (this will be a check mark, a question mark or an "X") and select **Allow**.

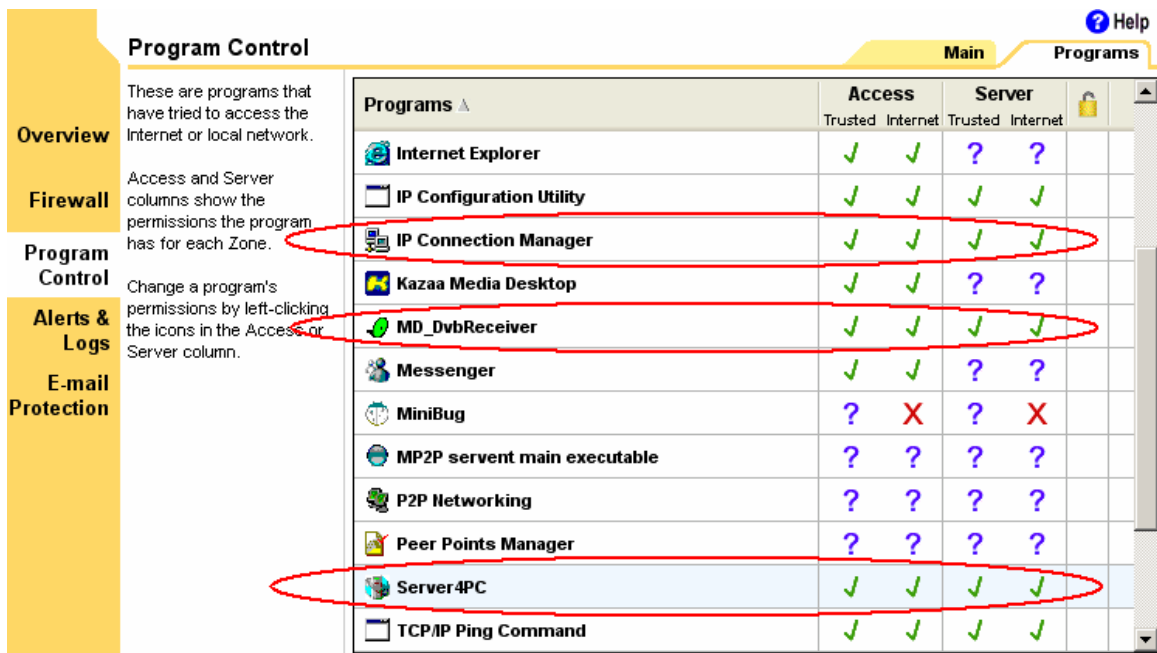


Figure 8-2

D. Zone Alarm is now configured to use with SatDirect Plus.

### Specific Configurations for Kerio Personal Firewall

- A. The following steps are to be accomplished after the Kerio Personal Firewall has been installed and is run for the first time.
- B. The Kerio Personal Firewall is designed to learn as it goes so first time that the Kerio Personal Firewall detects an attempted exchange through the firewall you will get a connection alert. As shown in Figure 8-3

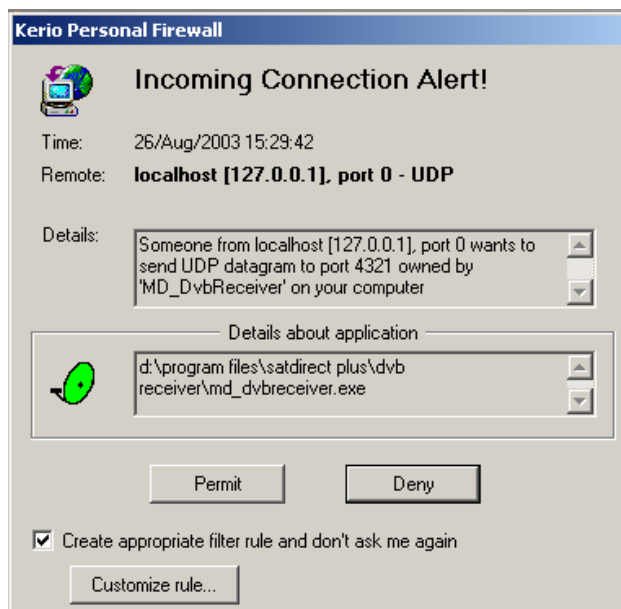


Figure 8-3

In the **Details About Application** section as also shown in Figure 8-3, if the details show **c:\program files\satdirect plus\dvb receiver\md\_dvbreceiver.exe** or **c:\program files\satdirect plus\dvb receiver\ipconnman.exe** place a check mark beside **Create appropriate filter rule and don't ask me again** and click **Permit**.

This may need to be done several times until the firewall has learned how your connection is maintained